

iHSS INTEGRATED HYDROGRAPHIC SURVEY SYSTEM



UNIFIED SURVEY TECHNOLOGY FOR THE ACQUISITION OF HIGH-QUALITY MARINE DATA

RENT

Ideal for on-demand surveys where quick mobilisation is critical

SUBSCRIBE

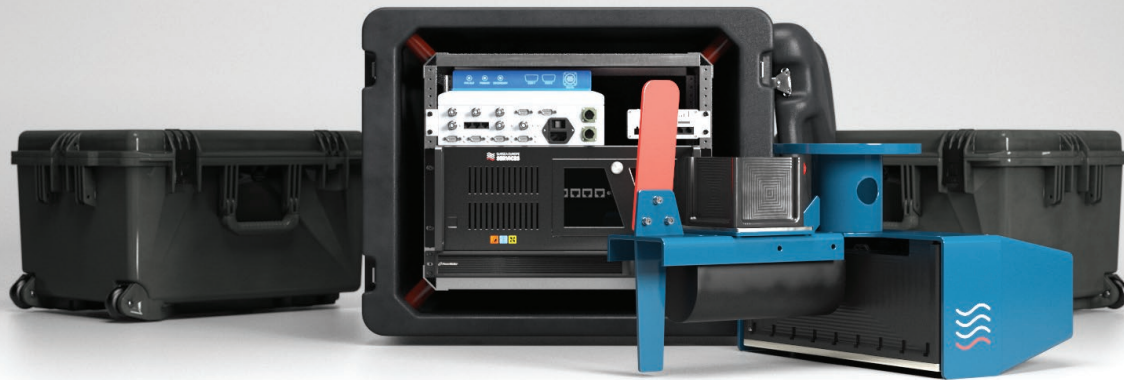
Guaranteed access to the tools you need, only when you need them

BUY

Competitive, user-focused sales for newbuild and retrofit projects

SUPPORT

24/7 remote and field support for equipment and surveys



Optimise your hydrographic workflow

**iHSS = MULTIBEAM · WORKSTATION · SOFTWARE ·
INERTIAL NAVIGATION SYSTEM · MOUNTING SOLUTION**

Save time and money with a survey ready solution for fast deployment on any vessel of opportunity, anywhere in Europe. The cutting-edge iHSS concept includes everything you need to simplify and optimise the collection of hydrographic marine data up to the new IHO S-44 Exclusive Order standards.

Easy to select the right configuration for the job

Quick to install and calibrate on almost any type of vessel available

Outstanding data quality in even the harshest conditions

Join the survey fast-track

The iHSS is a powerful solution for hydrographic survey campaigns. Delivered as an all-in-one solution, it is also ready to meet requirements for urgent, on-demand 'gap filler' missions.



It is 100% user-configurable, can be delivered in most cases within 24 – 48 hours and usually takes less than an hour to install and calibrate.

If you need to locate an expensive, essential tool lost over the side, or urgently confirm a data anomaly, the iHSS reduces your non-productive time by being ready for you, when you need it.



Enabling your scheduled and on-demand surveys

There are two highly configurable iHSS variants to ensure that users with different needs in offshore and coastal waters, as well as ports and harbours and inland waterways can leverage the procurement, deployment and operational advantages the integrated concept enables.

	 iHSS	 iHSS-Compact
Multibeam	1 x Multibeam Echosounder - R2Sonic Sonic 2024* <ul style="list-style-type: none"> • 4000 m immersion depth rating • Antifouling coating • Ultra High Density (UHD) up to 1.024 independent soundings per ping • Ultra-High Resolution (UHR) 700 kHz Output • TruePix / MultiSpectral Backscatter Output • Raw Water Column Data Output 	1 x Multibeam Echosounder - R2Sonic Sonic 2020* <ul style="list-style-type: none"> • 100 m immersion depth rating • Ultra High Density (UHD) up to 1.024 independent soundings per ping • Ultra-High Resolution (UHR) 700 kHz Output • TruePix / MultiSpectral Backscatter Output
Multibeam Mounting	1 x Combined Mounting Bracket (Multibeam & MRU)	1 x Sonic 2020 Integrated Mounting Frame & Hardware Kit (Multibeam & MRU)
Integrated Inertial Navigation System	1 x R2Sonic I2NS Type II** <ul style="list-style-type: none"> • Roll / Pitch Accuracy: 0.02° with RTK • Heading Accuracy: 0.03° with 2 m antenna baseline • Heave Accuracy 5 cm or 5%, 2 cm or 2% with TrueHeave™ • Optional Fugro Marinestar GNSS G2/G4+ subscription service at additional cost per day 	1 x R2Sonic I2NS Type II** <ul style="list-style-type: none"> • Roll / Pitch Accuracy: 0.02° with RTK • Heading Accuracy: 0.03° with 2 m antenna baseline • Heave Accuracy 5 cm or 5%, 2 cm or 2% with TrueHeave™ • Optional Fugro Marinestar GNSS G2/G4+ subscription service at additional cost per day
Workstation	1 x Powerful Survey and Post-Processing PC or Notebook 1 x Monitor, 28" 1 x 19" Helmsman Display (with 15 m HDMI cable)	1 x Powerful Survey and Post-Processing PC or Notebook
Software	1 x complete BeamworX Suite	1 x complete BeamworX Suite
Sound velocity	1 x AML Micro•X™ SV integrated surface sound velocity probe 1 x AML Base•X™ SVP shallow water sound velocity profiler (100 m or 500 m)	1 x AML Micro•X™ SV integrated surface sound velocity probe 1 x AML Base•X™ SVP shallow water sound velocity profiler (100 m or 500 m)
Cabling	1 x Deck cable, 15 m, for Multibeam, MRU and Micro•X™ SV (optional 25 m and 50 m) 2 x Antenna cable, 15 m (optional 25 m and 50 m)	1 x Deck cable, 15 m, for Multibeam, MRU and Micro•X™ SV (optional 25 m and 50 m) 2 x Antenna cable, 15 m (optional 25 m and 50 m)
Delivery	3 x Pelican cases	1 x Pelican case

*The iHSS and iHSS-Compact are also available as dual head systems.

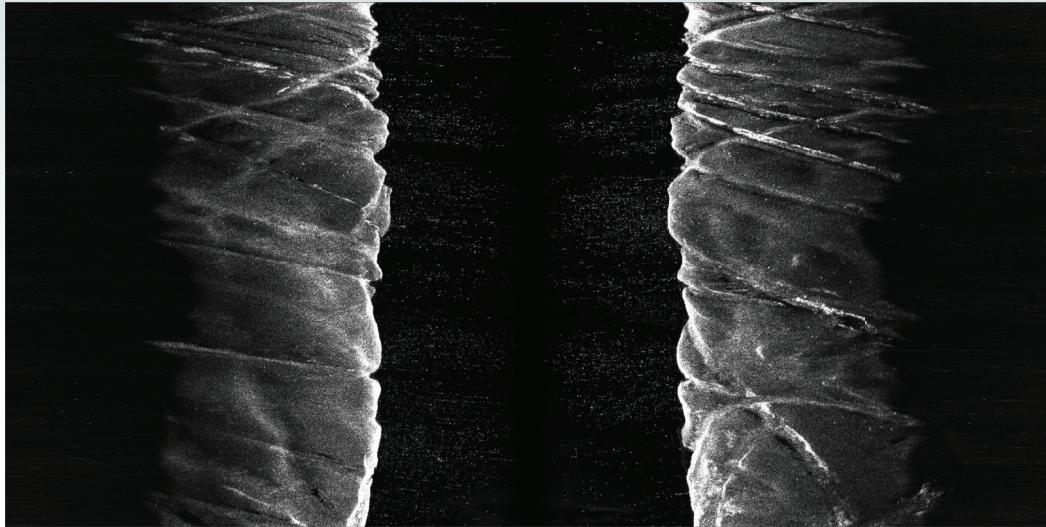
** Navigation can be changed to the R2Sonic I2NS Type I, at an additional cost.



New innovations reduce the cost of marine data

The iHSS Over The Side (OTS) Pole Mount features an all-in-one design with Multibeam, IMU and GPS antennas in one reference frame, which simplifies installation and reduces potential errors from inconsistent or wrong offsets.

It is ideal for permanent and temporary installations and offers significant efficiency when moving the system to a different vessel as there is no need to recalibrate. The OTS Pole Mount also enables retraction of the sonar head when in transit, allowing for faster transit and lower overall costs.



Using R2Sonic multibeam, the iHSS delivers highly compressed water column imagery data, processed in real-time.

Delivering marine data on your terms

Subsea Europe Services provides reliable and easy-to-use hydroacoustic survey systems that do not require expert-knowledge to deliver high-quality marine data.

The iHSS and all rental pool products benefit from the in-depth knowledge and experience of the Subsea Europe Services team; a crew of experts always ready to help from shore, or join you onboard to maximise your survey performance.

Choose how you access the iHSS according to your needs

Rent

We can have your survey system configured and delivered within days of your order

Subscribe

The system will always be delivered and ready to go for your planned project window

Buy

Expert pre- and after sales support from the expert team at Subsea Europe Services

THE iHSS IS ESSENTIAL TO MAKING IT POSSIBLE FOR EVERY ORGANISATION TO COLLECT AND EVALUATE MARINE DATA PROFESSIONALLY



CHECK OUT OUR EXTENSIVE RENTAL POOL FOR HIGH AVAILABILITY ON COMPONENTS, SYSTEMS AND PACKAGES

SCAN WITH YOUR SMARTPHONE

Subsea Europe Services GmbH is a hydrographic survey technology provider based in northern Germany. We offer:

- » **FAST-TRACK DELIVERY ANYWHERE IN EUROPE**
- » **REMOTE TECH AND ON-BOARD SURVEY SUPPORT**
- » **IN-HOUSE POST PROCESSING EXPERTISE**